

Transportation Guide

**By Car**  
Guri IC / Hwado IC / Deoksok IC → Namyangju  
Hanam IC → Oryong-dong → Palgongsang Bridge → Namyangju  
Route 6 → Namyangju, Route 46 → Namyangju

**By Bus**  
Coming from Cheongwangri, Seoul  
Via Namyangju City Hall : 30, 65, 165, 330-1, 1330-2, 1330-3, 1330-4, 1330-44  
Wabu Area : 166-1, 167 / Jinjeop Area : 88, 707 / Jingson-Oram Area : 202  
Coming from Gangbyeon Station, Seoul  
Via Namyangju City Hall : 93, 97 / Wabu Area : 15, 112-1, 1660, 2000-1  
Jinjeop Area : 1, 9, 9-1, 11, 91 / Oram : 9-1, 91, 100  
Coming from Jamsil Station, Seoul  
1000, 1001, 1100, 1200, 1200-1, 1670, 8002, 8012, M2316, M2323  
Coming from Gil-dong, Seoul  
Via Namyangju City Hall : 1-4 / Jinjeop-Oram Area : 23  
Coming from Dangnang, Seoul  
1100, 1700, 2000, 7007, 8001  
Coming from Dangnang, Seoul  
10, 10-5, 33, 33-1, 80, 85, 105  
Coming from Seokgye Station, Seoul  
65-1, 73, 74, 76

**By Subway/Railroad train**  
Jungang Line (Subway)  
Yongsan → Cheongwangri → Guri → Durong → Yangjeong → Deokso → Dosim →  
Palgong → Ungjeon  
Gyeongseon Line (Subway)  
Songdong → Byeolae → Toegyeon → Sareung → Geumgok →  
Pyeongnaehoyong → Cheonmasan → Masok

**Namyangju Brand Call Taxi : 1544-7001**

**Useful Information**  
Namyangju City Hall  
Namyangju Police Station  
Namyangju Fire Station  
Guri Namyangju Office  
of Education  
Namyangju Post Office  
Namyangju-st Traffic  
Information Center  
www.nyj.go.kr  
www.gppolice.go.kr/nyj  
119.gp.go.kr/namyangju  
www.goein.kr  
www.koreapost.go.kr/gj/472  
traffic.nyj.go.kr  
031-592-4900  
182  
031-590-0501-5  
031-563-5191  
031-590-0700  
031-590-8151

English

City of Jeong Yak-yong  
**Nam yangju**  
Tourist Map



www.nyj.go.kr

Accommodations

Name	Location	Number (031)
Gold Tourist Hotel	Byeollae-myeon	841-2121
CH Tourist Hotel	Byeollae-myeon	841-6767
Hotel The May	Byeollae-dong	551-8700
JD Tourist Hotel	Jinjeop-eup	571-2266
Reira Hotel	Oram-eup	575-5195

Village lodging

Name	Location	Number (031)	Name	Location	Number (031)
Capdon & Capdon	Suding-myeon	591-5483	Susan Garden	Suding-myeon	592-9247
Good Morning Pension	Suding-myeon	591-5483	Guardian Angel	Suding-myeon	595-3975
Gaunseonok Ongtamsam	Suding-myeon	592-1040	Smile House	Suding-myeon	593-6208
Neosunmadang	Suding-myeon	594-3800	Alin 2 Pension	Suding-myeon	594-6293
Nobian Lodging	Joan-myeon	577-4615	Acacia	Joan-myeon	576-6767
Dasangri	Suding-myeon	591-5450	Fisherman's House	Hwado-eup	592-1047
Dabbi Artis	Joan-myeon	070-4419-5753	Oram Valley Lodging	Oram-eup	575-3690
Dae-a Camp Pension	Suding-myeon	511-9968	Ungjeon Cabin	Joan-myeon	576-7952
The Best Spa Pension	Suding-myeon	511-6667	Reira	Jinjeop-eup	507-7727
Didan	Suding-myeon	593-3389	Cheonmicheon Pension	Suding-myeon	591-2549
Thurak	Hwado-eup	511-9195	Green Scent	Suding-myeon	576-5702
River Hill Village	Hwado-eup	593-8916	Chongwang	Hwado-eup	593-4948
Myeongseong	Suding-myeon	594-8868	Taenhamam	Suding-myeon	592-2832
Mulsoi Lodging	Suding-myeon	593-1910	Tol	Suding-myeon	594-0081
Mise Sarang	Oram-eup	575-1220	Pension Awake	Suding-myeon	070-4254-9233
Midulside	Hwado-eup	592-1836	Ha Yesong Pension	Suding-myeon	070-4418-3366
Bauggae	Suding-myeon	591-1605	Haenmau	Suding-myeon	592-1472
Sarara Lodging	Suding-myeon	591-7153	Haenmau	Suding-myeon	594-2033
Success House	Suding-myeon	593-8208	Healing Pension	Suding-myeon	594-3810
Suding Pension	Suding-myeon	591-2931	Healing Pension	Suding-myeon	511-7071
Suding Bon Cherville	Suding-myeon	592-0186			
Suding Valley Pension	Suding-myeon	599-9753			

※ Limited to businesses that have reported the lodging with required standards. (As of Jul, 2019)



**Nam yangju**  
Tourist Map

**Dasan-gil Course**  
Approx. 20.1 km / takes 6 hours 30 minutes  
Sampae District → Entrance of Yeongsan Mountain →  
Maje Village → Jeong Yak-yong Historic Site →  
Ungjeon Station

**Eight Views of Namyangju**

**1<sup>st</sup> view**  
Jeong Yak-yong Historic Site

Ecological Park, The Museum of Silhak, Jeonksan Island, Heungjae Station (former), Palgongsang Lake, Namyangju Museum

**2<sup>nd</sup> view**  
Gwangneung Forest

Gwangneung, Bongseonsa Temple

**3<sup>rd</sup> view**  
Bukhangang Bike Path

Water Garden, Heart Garden, Songjeong temple (counse), Ungjeon Mountain, Piano Falls

**4<sup>th</sup> view**  
Sunrise and Sea of clouds, Cheonmasan Mountain

Wild flowers, Sulimsa Mountain, Namyangju Gunggo House, Byongwasa Temple

**5<sup>th</sup> view**  
Chungnyeongsan Mountain

Bigum Valley, Seorisan Mountain

**6<sup>th</sup> view**  
Onam Lake Park

Chinese Juniper at Yangri-ri, Palgongsang-ri Valley

**7<sup>th</sup> view**  
Buramsan Mountain

Naewonam Hermitage, Buramsa Temple, Heungguksa Temple

**8<sup>th</sup> view**  
Mjeum Quay, Sampae Hangang Park

Memorial Stone for Jo Malsang

**Legend**

- Hotel
- Botanical Garden
- Theme Park
- Historic Site
- Museum
- Art Museum
- City Hall
- Government Office
- Forest
- Desert
- Expressway
- National Highway
- Local Highway
- Bike Path

Based by Namyangju of Tourism Promotion Division Tel. 031-590-5382  
Copyright © 2019  
Planning Designer: Gwangneung Co., Ltd. Tel. 031-3443-9745  
The distance may differ due to the characteristics of the dimensional map.  
Namyangju-ri Tourist Map is protected by the copyright law and may not be legally reproduced or reprinted.



## Byeollae Area



### Five Gyujeongso that prayed for the Royal Family's well-being Heungguksa Temple c1



Heungguksa Temple was a *wondang* (a sanctuary where you pray for the soul of the deceased) in 1568 (1<sup>st</sup> year of King Seonjo). In the middle of the Joseon Dynasty, it became the *wondang* for the royal family.

56, Deongneung-ro 1071beon-gil, Namyangju-si, Gyeonggi-do  
031-527-9557

### One of the four famous temples around Seoul Buramsa Temple D1



Built during the reign of King Heondeok of Silla by Jijung, the site still has the Daegyeongjeon Hall, Jewollu Pavilion, Gwaneumjeon Hall, Sasangak Pavilion, etc. You can see the Printing Woodblocks of Buramsa (Gyeonggi-do Tangible Cultural Asset No. 53), Stele at Cheonbosa Buramsa Temple, and Buddha Triad. The Printing Woodblocks of *Seokssi wollyu eunghwa sajeok*, Treasure No. 591, stored at Dongguk University Museum are also relics from here.

190, Buramsan-ro, Byeollae-dong, Namyangju-si, Gyeonggi-do  
031-527-8345 www.bulamsa.com

## Joan Area



### Learn all about Jeong Yak-yong

### Jeong Yak-yong Historic Site G4



This is where Jeong Yak-yong was born and ended his life after his exile. It is comprised of the Yeouddang Hall, his birth house showing his frugal life, his tomb, a memorial hall exhibiting the pioneer's achievements and traces, and a culture hall where Jeong Yak-yong is reinterpreted through modern views.

11, Dasan-ro 747beon-gil, Joan-myeon, Namyangju-si, Gyeonggi-do  
031-590-2481

### Savor the beautiful scenery around Paldangho Lake Ecological Park G4



A neatly organized park with convenient facilities and ecological landscape. You can see the lake in a close distance in the hiking trail created in the dock. The name 'Suwoljeong' (the octagonal pavilion in this park, means that the moon is reflected on the lake. In addition, you can see the whole Paldangho Lake and Sonaeosom Island in one view from the 'Sonaearu Observatory'.

767, Dasan-ro, Joan-myeon, Namyangju-si, Gyeonggi-do

### The first museum themed with Silhak The Museum of Silhak G4

This is a museum specialized in *Silhak*, established to review the emergence of *Silhak*, the driving force to reformation and academy in the late Joseon Dynasty and inherits the idea in a modern way through investigation and research in the history and culture of *Silhak*, collecting and preserving the related legacy.

16, Dasan-ro 747beon-gil, Joan-myeon, Namyangju-si, Gyeonggi-do  
031-579-6000-1 http://silhak.gyrf.kr

### Beautiful ridges with fantastic rocks and spring royal azaleas Buramsan Mountain D1



At the height of 509.7 meters, the mountain has ordinary physical features. However, gigantic rocks and thick forest make a beautiful scenery. It was named Buramsan (Buddha Rock Mountain) because

the peak looked like Buddha with a monk's hat. The ridges go north and south, the bedrock is granite, and there remains a mound, a site for a fortress and a beacon at the top.

356, Songsan-ro, Namyangju-si, Gyeonggi-do

### Beautiful valleys and different hiking trails

### Suraksan Mountain c1



Suraksan Mountain is called the four famous mountains around Seoul together with Dobongsan, Bukhansan, and Gwaksan Mountains. It is 640.6 meters high and has gentle features. The huge granite rock face is exposed. The mountain has attractions such as falls which include the Geumnyu, Euliyu, etc. and temples including the Heungguksa Temple and the Naewonsa Temple (Naewonam Hermitage). Many mountaineers visit on weekends.

41, Sunhwagung-ro 945beon-gil, Namyangju-si, Gyeonggi-do

## Sudong Area



### Place for family outing in the suburb Mulmalgeum Arboretum c4



The arboretum contains various plants in the 20 exhibition gardens including the Four Seasons Garden and operates experiential arboretum programs. You can experience and learn about the various aspects of trees through programs such as the Korean pine tree rest area, wood commentaries, wood healing, etc., woodwork experiences such as woodcraft, wood furniture making, etc., and the Children's Imaginative Sculpture Playground.

47-4, Jidun-ro 307beon-gil, Sudong-myeon, Namyangju-si, Gyeonggi-do  
031-590-4076

### With thick forest and beautiful valleys Chungnyeongsan Mountain B5



A mountain of 879 meters high between Jodongcheon Stream and Sudongcheon Stream. It has oddly shaped rocks including the Namibawi Rock, Suribawi Rock, etc., and thick Korean pine forest. According to a legend, King Taejo Yi Seong-gye came to this mountain to hunt but it was fruitless. On the way back, a chaser said that the mountain is sacred and that they need to have a ritual for the mountain spirit. After the ritual, the hunt was successful and the name became Chungnyeongsan, meaning a mountain that needs sacrificial offerings.

299, Chungnyeongsan-ro, Sudong-myeon, Namyangju-si, Gyeonggi-do

### Rest in the companionship of nature

### Chungnyeongsan Recreational Forest B4



nature observation spaces, etc. in the wide forest. It makes a perfect resting area for families and also a great one-day hiking course.

299, Chungnyeongsan-ro, Sudong-myeon, Namyangju-si, Gyeonggi-do  
031-592-0681

### Beautiful royal azaleas blossom in spring

### Seorisan Mountain A4



This mountain is located northwest of the Chungnyeongsan Mountain with the Jeolgogae Pass between them. It was originally not very well known because of the Chungnyeongsan Mountain until the royal azalea field which is of 300 meters down from the top was found and people started visiting it during the azalea season. You can continue to Chungnyeongsan Mountain through the ridges from the peak. It makes a beautiful scenery around Jeolgogae Pass in the fall with silver grass fields.

08ang-ri, Sudong-myeon, Namyangju-si, Gyeonggi-do

### A beautiful valley surrounded by mountains

### Bigeum Valley A4



Seorisan, Jugeumsan, Cheomasan Mountains surround the valley like folding screens and the shades from the dense forest makes a great summer hideout. The camping site and rest area made around the valley enables you to play safely in the water. It is considered the most beautiful place among the nearby valleys.

Naebang-ri, Sudong-myeon, Namyangju-si, Gyeonggi-do

## Things to see & enjoy



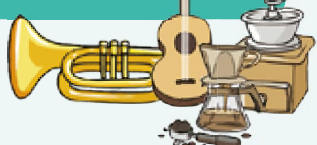
### Jeong Yak-yong Cultural Festival



A cultural festival held in Jeong Yak-yong Historic Site. It is a festive fair of different kinds of public events and performances where everyone mingles with each other. The life and idea of Jeong Yak-yong is re-interpreted in a cultural aspect, and people are given an opportunity to experience Jeong Yak-yong through our culture.

Time : Every April and October  
Place : Jeong Yak-yong Historic Site and Ecological Park area (Neungnae-ri, Joan-myeon)  
Programs : Experience booth, flea market, literary contest, Yeouddang music concert, etc.

## Museum



### The comprehensive history and culture space in Namyangju Namyangju Museum F3



A place where you can see the history and traditional culture of Namyangju. In the permanent exhibition, prehistoric relics excavated from Namyangju, relics from Joseon and modern times are displayed. In the special exhibition, you can see various exhibitions with new themes every year. Educational programs for preschoolers, schools, and families are also operated.

121, Paldang-ro, Wabu-eup, Namyangju-si, Gyeonggi-do 031-590-8600

### A sculpture art museum in nature Moran Art Museum D5



In the 8,500-pyeong (approx. 28,100m<sup>2</sup>) of outdoor sculpture garden, artworks of famous Korean sculptors are exhibited permanently. Inside the museum, you can see various artworks, mainly flat pieces, in four exhibition halls.

8, Gyeongchun-ro 2110beon-gil, Hwado-eup, Namyangju-si, Gyeonggi-do  
031-594-8001 www.morammuseum.org

### All about Coffee

### Waltz & Dr. Mahn Coffee Museum E5



The museum introduces unique history and information about coffee from different countries of the world, gives you an opportunity to experience coffee and communicates with you. Every Friday, Dr. Mahn music concert is opened. Through this small classic concert, the museum gives a chance to harmonize with coffee, art, and people.

856-37, Bukhangang-ro, Joan-myeon, Namyangju-si, Gyeonggi-do  
031-576-0020 www.wndcof.org

## Cultural Properties & Nature



### The first dongwonigang tomb in Joseon

### Gwangneung Royal Tombs Historic Site No. 197 B2



The tomb of King Sejo and Queen Jeonghui. In the early Joseon, the Gwangneung Royal Tomb was a great reformation in terms of the royal tomb system and has influenced the later generations. Before this, the tombs of a king and his queen were made as twin tombs or they were buried together. However, Gwangneung is a dongwonigang (同原異岡) type, having two separate tombs on two different hills with a pavilion between them.

354, Gwangneungsumgwon-ro, Jinjeop-eup, Namyangju-si, Gyeonggi-do  
031-527-7105

### The tomb of Queen Jeongsun, the wife of King Danjong Sareung Royal Tomb Historic Site No. 209 D2



In 1456, after the attempt to restore his throne, King Danjong was degraded as to Nosang and put to death in his exile. Upon this, the queen was also degraded from a Lady to a government slave. In 1521 (16<sup>th</sup> year of King Jungjong), when she died at the age of 82, Jungjong performed her funeral with the honor of a lady. In 1636 (24<sup>th</sup> year of King Sukjong), Danjong was restored in his name and she became Queen Jeongsun. The tomb was named Sareung and Sukjong honored it.

180, Sareung-ro, Jinjeop-eup, Namyangju-si, Gyeonggi-do 031-573-8124

### Gwangneung Forest Festival



Gwangneung Forest Festival is held in Gwangneung Forest, a UNESCO designated biosphere reserve. Gwangneung Forest is opened to the public only once a year during the festival. The special space where you cannot normally visit gives you an opportunity to walk in the forest path of many great flowers, wild plants, and rare trees and feel the value of nature.

Time : Every October Place : Gwangneung Forest area, Jinjeop-eup

### Toegyeon Sandaenori

Sandaenori (mask dance) is a traditional folk art that had been handed down in Toegyeon, Namyangju-si until 1930s. The masks and costumes of sandaenori have disappeared under the Japanese repression policy and went almost extinct through the Korean War. However, efforts to restore its root has been recently added. Currently, the restoration of 12 chapters have been completed and the passing down of performances are in an active process.

Every Dano (May 5 of lunar calendar) Place : Toegyeon Station area

### Bukhangang Outdoor Stage & Permanent Performance 'Bukhangang Culture Outing' D5



At Bukhangang Outdoor Stage with a view of the flowing river, permanent performance of the 'Bukhangang Culture Outing' is held every Saturday from April to October. The performances are free and anyone can watch the performances including puppet show themed 'Always, Diversely, and Joyfully,' music concert, and ballet.

1554, Bukhangang-ro, Hwado-eup, Namyangju-si, Gyeonggi-do 031-590-4598

Time : 3:00 PM every Saturday, April-October (5:00 PM in July-August)

### Where the misfortunate Korean emperors are buried

### Hongneung and Yureung Historic Site No. 207 D3

Hongneung is the tomb of Emperor Gogung and Empress Myeongseong. Unlike other royal tombs, Gogung proclaimed the founding of the Empire of Korea, and his tomb became an imperial tomb modeled after Xiaoling (孝陵), the tomb of the founder of Ming dynasty, Yureung is the tomb of Emperor Sunjong, his first wife Empress Sunmyeonghyo, and his second wife Empress Sunjeonghyo, consisting of three rooms in one tomb. Although the structure of Yureung is similar to Hongneung, it has more realistic and advanced stone works.

352-1, Hongyureung-ro, Namyangju-si, Gyeonggi-do 031-591-7043

### A temple full of lotus scent

### Bongseonsa Temple B2



The Bronze Bell of Bongseonsa Temple, Treasure No. 397, is located here. The bell shows the early type of bell in Joseon which had no sound tube and is still used today.

32, Bongseonsa-gil, Jinjeop-eup, Namyangju-si, Gyeonggi-do  
031-527-1951 www.bongseonsa.net

### Harmony of beautiful scenery and the temple

### Myojeoksa Temple D3

The temple is known to be built by Great Master Wonhyo during the time of King Munmu of Silla. There is a story that it was a place where the King's secret agents had military training. During the Japanese Invasion of Korea, it was used to train the monk soldiers, and a place to train monks for military service exam.

174, Sure-ro 661beon-gil, Wabu-eup, Namyangju-si, Gyeonggi-do 031-577-1761

### Dasan Art Hall E2



A special performance hall opened in May 2018 to provide the public enjoyment of different kinds of cultures. It is located in Jigjeon District, Dasan New Town and the building has one basement floor and two ground floors with a total area of 2,449m<sup>2</sup>. There are 496 seats in total, 376 on the first floor and 120 on the second, showing various cultural art performances.

7, Dasanjungang-ro, Namyangju-si, Gyeonggi-do 031-590-4358

### Mieummaru Food Culture Street E2

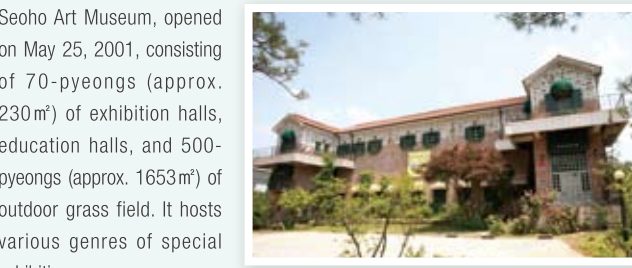
Mieummaru Quay had long been a rest area for boats that came to Hangang River. Although there are no more boats or boatmen at the site of the quay, wind and sun still welcome people like the old days. There are many good restaurants around Mieummaru Quay and the place is designated as the 'Mieummaru Food Culture Street' by Gyeonggi-do.

26, Gangbyeonbuk-ro 632beon-gil, Namyangju-si, Gyeonggi-do (Susook-dong)



Meokgol Pear is famous for its fresh taste and sweet nectar as you bite it. It is the specialty of Namyangju that is boasted with the most confidence, and approximately 9,000 tons of Meokgol pears are produced from nearly 350 farms. They are sold domestically in many parts of Korea and also exported to Japan, Taiwan, Hong Kong, Europe, etc.

### Various exhibitions regardless of types and genres Seoho Art Museum D5

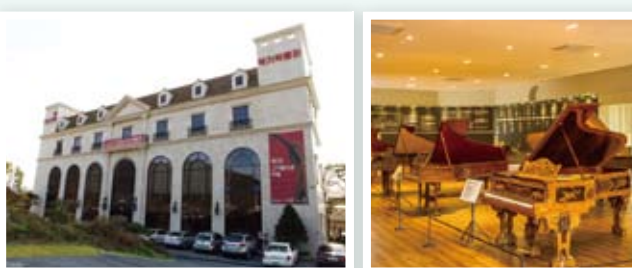


Seoho Art Museum, opened on May 25, 2001, consisting of 70-pyeong (approx. 230m<sup>2</sup>) of exhibition halls, education halls, and 500-pyeong (approx. 1653m<sup>2</sup>) of outdoor grass field. It hosts various genres of special exhibitions every year.

1344, Bukhangang-ro, Hwado-eup, Namyangju-si, Gyeonggi-do 031-592-1865  
www.seohart.com

### Explore music of the world through instruments

### Praum Museum F3



Praum Museum is the first western musical instrument museum in Korea where you can listen, touch, and feel the music to communicate with it. Various special exhibitions, educational programs, and experiential programs are operated so that the visitors can directly experience music that they had only felt through books and melodies.

756, Gyeonggang-ro, Wabu-eup, Namyangju-si, Gyeonggi-do  
031-521-6043 www.praum.or.kr

### Outstanding size and shape

### Memorial Stone for Jo Malsaeng E2



Namyangju Local Remain No. 8  
A memorial stone for Jo Malsaeng, a scholar in the early Joseon period. The stone has a unique shape of a turtle looking out to the left with a stone body on its back. As it is looking at the Hongyureung Tombs, it looks as if the turtle predicted that the tomb of Gogung was to be moved to this place beforehand.

San 2-2, Susook-dong, Namyangju-si, Gyeonggi-do

### A justified change of sewage treatment

### Piano Falls and Piano Restroom D5

Purified water from Hwado Sewage Treatment Plant flows to the artificial falls and gets purified once again. This artificial waterfall is almost of 92 meters. Its size and beauty makes it hard to believe that it is an artificial waterfall and an environment-friendly tourist attraction that reminds people of the value of water. Piano Restroom in the shape of a huge grand piano is clean and cozy. It was selected as one of the '30 beautiful public restrooms in Korea.' You can see the Piano Falls falling from this restroom. The stairs to the bathroom are designed in the shape of piano keyboards and makes beautiful piano sound as you step on them.

562, Pokpo-ro, Geumnam-ri, Hwado-eup, Namyangju-si, Gyeonggi-do  
031-590-8224

### Find rare relics

### Wooseokheon Natural History Museum c2

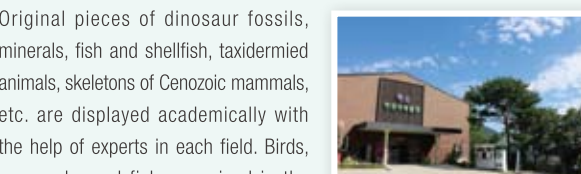


This museum mainly exhibits fossils and minerals of geological periods. The exhibition includes standard fossils representing the Paleozoic, Mesozoic, and Cenozoic eras, fossil skeletons to help understand dinosaurs, as well as the original pieces of rare relics such as the fossils of a dinosaur fetus in early stage that is used to extract DNAs.

1095, Geumgang-ro, Jinjeop-eup, Namyangju-si, Gyeonggi-do  
031-572-9555 www.geomuseum.org

### An ecological space full of life

### Duk-so Natural History Museum E3



Original pieces of dinosaur fossils, minerals, fish and shellfish, taxidermed animals, skeletons of Cenozoic mammals, etc. are displayed academically with the help of experts in each field. Birds, mammals, and fish are raised in the small ecological park created in the museum so that children as well as adults can observe and learn about nature.

46-11, Seoksil-ro, Wabu-eup, Namyangju-si, Gyeonggi-do  
031-521-7166 www.duksomuseum.com

### A representative arboretum of Korea

### National Arboretum B2



The National Arboretum created in an area of 1.5 million pyeong (approx. 4,958 m<sup>2</sup>) is a natural space where you can enjoy fresh air and green trees. It has 2,844 types of plants in full-scale arboretum, forest zoo, and forest museum. You can see rare animals, natural monuments (Korean Woodpecker Habitat), and plants growing in nature.

354, Gwangneungsumgwon-ro, Jinjeop-eup, Namyangju-si, Gyeonggi-do  
031-540-2000 www.kna.go.kr

### A resting place in the wild nature

### Sandulsori Healing Forest Botanical Garden D1



This arboretum has 1,200 types of plants, 15 themed gardens such as the wild flower garden, herb garden, etc., making it a natural rest area. It operates various healing programs and lectures with the theme of 'healing forest,' forest play school for children, and museum of various objects.

48-31, Buramsan-ro 59beon-gil, Namyangju-si, Gyeonggi-do  
031-574-3252 www.sandulsori.co.kr

### Hanulchae Hanok Experience c5



You can stay in a Hanok house built in the traditional way and experience the *gudeulbang* (stone floor room with heating underfloor), traditional games (*yut*, *jeogichagi*, etc.), vegetable garden (summer only), etc.

132-11, Ipseok-ri, Sudong-myeon, Namyangju-si, Gyeonggi-do  
031-566-6665

### Temple Stay



Travel for self-reflection in a quiet mountain temple, meditate in *chamseon* (zen meditation) with proper posture and breathing, experience *barangungyang* (monastic meal) and tea ceremony.

Myojeoksa Temple  
031-577-1761 174, Sure-ro 661beon-gil, Wabu-eup, Namyangju-si, Gyeonggi-do  
Bongjinsa Temple  
031-594-8995 295, Sareung-ro 155beon-gil, Jinjeop-eup, Namyangju-si, Gyeonggi-do  
Bongseonsa Temple  
031-527-9999 32, Bongseonsa-gil, Jinjeop-eup, Namyangju-si, Gyeonggi-do  
Suljinsa Temple  
031-591-3364 115-13, Cheommasan-ro, Namyangju-si, Gyeonggi-do

Namyangju City Tour One-day tour program that connects historic sites and various tourist spots in Namyangju-si by themes so that you can see the city more effectively and substantially

Operating period : April-November Time : 09:00-17:30  
Courses : History Course, Culture Course, Healing Experience Course, etc.  
Inquiry : 031-590-2799 \*Contents of courses and schedules may change

Cultural Tourism Commentator Provides fun and detailed commentaries on cultural historic sites and tourist spots for those who are visiting Namyangju-si

Operating period : March-December Time : 10:00-17:00  
Operating locations : Jeong Yak-yong Historic Site, Hongneung & Yureung Tombs, Gwangneung Tomb, Sareung Tomb  
Inquiry : 031-590-5382 \*Reservation required in advance by locations