

Travel All Over GYEONGGI-DO

Tourist Guide Map

English

Gwangju-si



Namhansanseong Fortress

A fortress wall over 11 km long is built along the rugged natural terrain with an elevation over 480m. Because it was built over a long period of time, it shows construction techniques from different periods including the Three Kingdoms era to the Joseon period. Namhansanseong Cultural Festival is held between September and October every year.

San 23, Sansong-ri, Namhansanseong-myeon, Gwangju-si



Gwangju Culture Tour

Guri-si



East Nine Royal Tombs

East Nine Royal Tombs is the largest cluster of royal tombs from the Joseon Dynasty, and designated as a UNESCO World Heritage Site. There are nine tombs, including Geonwoljeung of King Taejo (Yi Seong-gye), the founder of the Joseon Dynasty.

197, Donggureung-ro, Guri-si
031-563-2909



Guri Culture Tour

Suwon Special City



Gwanggyo Lake Park

A lakeside park in the heart of the city of Suwon. It features nine fountains, a circular walking trail of 6.5km, family camping grounds, multipurpose experience centers, outdoor performance venues, and a sports climbing facility. The night view, especially, is magnificent.

165, Gwanggyohosu-ro, Yeongtong-gu, Suwon-si
070-8800-2460



Suwon Tour

Siheung-si



Geobukseom Island

An artificial island theme-park shaped like a turtle, created within Sihwa Multi Techno Valley, featuring marine tourist facilities including "Wave Park," Asia's first artificial surfing zone.

42, Geobukseomdulle-gil, Siheung-si 031-310-2911



Siheung Culture Tour

Yeoncheon-gun



Jaein Falls

One of the most beautiful landscapes can be found along the Hantangang River. The valley water flowing down from Jijangbong Peak formed a waterfall as it cascaded into the flat land. There is a beautiful love story associated with the name of the waterfall.

192, Bugok-ri, Yeoncheon-eup, Yeoncheon-gun 031-839-2289



Yeoncheon Culture Tour

Osan-si



Osan Miniature Village

Osan Miniature Village is the largest indoor miniature exhibition hall in the country, featuring displays on a scale of 1:87. It is a tourist attraction where visitors can experience the history and culture of various countries, and enjoy diverse programs and events where they can create their own miniatures.

12, Buksammi-ro, Osan-si
031-8036-7979



Osan City Hall

Yongin Special City



Yongin Recreational Forest

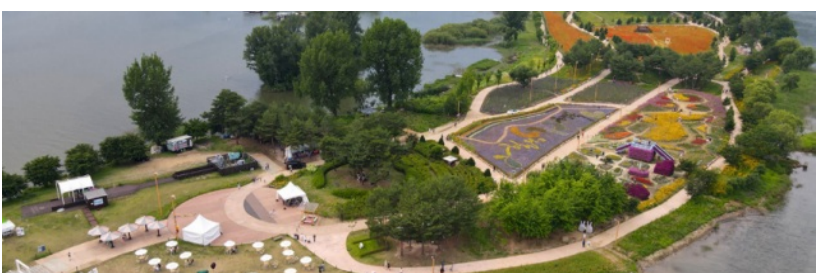
This recreational forest located at the foot of Jeongwangsan Mountain, makes the most of the natural space. Visitors can enjoy hiking and forest bathing in the beautiful natural environment, making it a popular retreat for contemplative relaxation.

220, Chobu-ro, Mohyeon-eup, Cheoin-gu, Yongin-si
031-336-0040



Yongin Culture Tour

Gapyeong-gun



Jarasum Island

Jarasum Island, comprising four islands, features leisure and ecological facilities and is famous for camping. It is also well-known as the venue for the Jarasum International Jazz Festival.

60, Jarasum-ro, Gapyeong-eup, Gapyeong-gun 031-580-2067



Gapyeong Culture Tour

고양시 Goyang Special City



Haengjusanseong Fortress

Recognized as State-designated Heritage Historic Site No. 56, Haengjusanseong Fortress is where the Battle of Haengju took place during the 1592 Japanese Invasion of Korea. It is now a famous tourist attraction offering various events and programs such as New Year's Sunrise-greeting, HaengjugaYesuriya, etc.

89, Haengju-ro 15beon-gil, Deogyang-gu, Goyang-si
031-8075-4646



Goyang Culture Tour

군포시 Gunpo-si



Royal Azalea Hill

It is the largest royal azalea colony in the metropolitan area located in the urban center of Sanbon New Town, with over 200,000 royal azalea trees planted. Every year, from late April to early May when the royal azaleas bloom, the Royal Azalea Festival is held.

1152-14, Sanbon-dong, Gunpo-si



Gunpo Culture Tour

김포시 Gimpo-si



Aegibong Peace Eco Park

Located in the only North-South joint-use zone (Free-zone) on the Korean Peninsula, this is a symbolic place representing peace and harmony. From here, you can enjoy a clear view of North Korea, about 1.4km ahead.

139, Pyeonghwagwon-ro, Haseong-myeon, Gimpo-si
031-989-7492



Gimpo Culture Tour

안산시 Ansan-si



Multicultural Street

In this street there are restaurants and stores of over 80 countries, including China, Russia, Vietnam, India, Uzbekistan, Indonesia, Sri Lanka, etc., allowing visitors to taste foods from around the world without needing to go abroad.

16, Damunhwa-gil, Danwon-gu, Ansan-si
070-4740-2580



Ansan Culture Tour

안성시 Anseong-si



Anseong Farm Land

Here, visitors can stroll through the wide meadows filled with various flowers blooming each season and take beautiful photos. You can also interact with domestic animals and feed them in the largest experiential farm in the country.

28, Daesindul-gil, Gogdo-eup, Anseong-si 031-8053-7979



Anseong Culture Tour

이천시 Uiwang-si



Baegun Lake

Surrounded by Baegunsan, Barasan, and Moraksan Mountains, the streams from their valleys flow into the lake. The water is clear, and the scenery is spectacular. There are restaurants and cafes around the lake, and visitors can also enjoy riding duck boats.

340-1, Hagui-dong, Uiwang-si 031-345-2549



Uiwang Culture Tour

의정부시 Uijeongbu-si



Wondobongsan Mountain

The entire mountain is composed of large rocks, and visitors can see magnificent views in all four seasons. There are many trails, and the peaks vary in elevation and contour, creating beautiful scenery.

Howon-dong, Uijeongbu-si
031-873-2792



Uijeongbu Culture Tour

이천시 Icheon-si



Icheon Ceramic Village (Ye's Park)

An artist village in Icheon, a thousand-year-old pottery city, integrating everything related to crafts such as ceramics, woodworking, etc. Every year, various events and festivals, including the Pottery Festival, are held.

Dojaysul-ro 5Beon-gil, Sindun-myeon, Icheon-si
031-638-1994



Icheon Culture Tour

GWacheon-si



Seoul Land

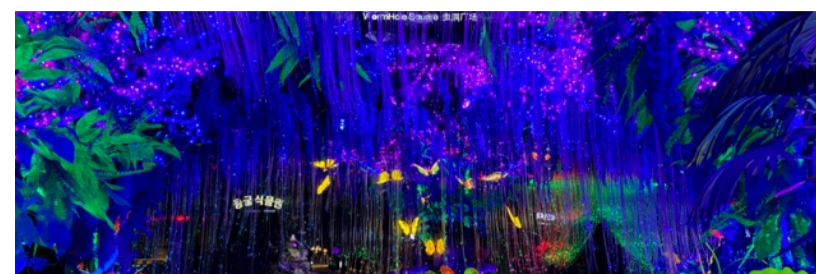
A large theme park representing Korea, offering a variety of attractions and spectacular performances for families. During night openings, there are various spectacular sights to enjoy, such as fireworks, laser shows, and the Luna Park light festival.

181, Gwangmyeong-ro, Gwacheon-si
02-509-6000



Gwacheon Tourist Information

광명시 Gwangmyeong-si



Gwangmyeong Cave

After the mine was abandoned in 1972, it was used as a warehouse for over 40 years before it was transformed into a historical and cultural tourist attraction. The inside is made into a cultural complex including Wormhole Square, Cave Arts Center, Golden Palace, etc.

142, Gahak-ro 85beon-gil, Gwangmyeong-si 070-4277-8902



Gwangmyeong Culture Tour

남양주시 Namyangju-si



Jeong Yak-yong Historic Site

This site was established in Namyangju, the hometown and the final resting place of Jeong Yak-yong, who was the first Asian to be designated for the UNESCO Celebration of Anniversaries. Visitors can explore his works and learn about his philosophy, studies, and beliefs.

11, Dasan-ro 747beon-gil, Joan-myeon, Namyangju-si
031-590-2837



Namyangju Culture Tour

동두천시 Dongducheon-si



Dongducheon Recreational Forest

A nature-friendly leisure experience space that opened on July 1, 2020, offering various forest activities for people of all ages, including various ecological experience programs.

1, Tapdonggasan-ro, Dongducheon-si
1588-3250



Dongducheon Culture Tour

안양시 Anyang-si



Anyang Art Park

Anyang Art Park, where Korea's first public art triennale, the Anyang Public Art Project (APAP), takes place, is an attraction where visitors can take beautiful photos of more than 50 contemporary art works. Visitors can enjoy various exhibitions as well as a selection of foods in restaurants and charming cafes lining Samsongcheon Stream in this famous tourist attraction in the metropolitan area.

Yesulgongwon-ro, Manan-gu, Anyang-si 031-687-9932



Anyang Culture Tour

양주시 Yangju-si



Chang Uchin Museum of Art

This museum communicates with people and the community through various exhibitions, educational programs, creative art studios, etc.

193, Gwonyul-ro, Jangheung-myeon, Yangju-si
031-8082-4245



Yangju Culture Tour

파주시 Paju-si



Imjingak Pavilion

A famous peace tourism destination, where visitors, both domestic and foreign, come to reflect on the bitter history of the Korean War and national division, and yearn for reunification.

164, Imjingak-ro, Munsan-eup, Paju-si 031-953-4744



Paju Culture Tour

평택시 Pyeongtaek-si



Pyeongtaek Lake Tourist Complex

Pyeongtaek Lake is a large artificial lake with an area of 7.2 million pyeong. It is connected by a waterfront deck from the Pyeongtaek Lake Tourist Information Center by the entrance to the Sandbar Park at the end of the road. With various attractions, cultural spaces, and convenience facilities, it is considered Pyeongtaek's top representative destination.

159, Pyeongtaekho-gil, Hyeonjeok-myeon, Pyeongtaek-si
031-8024-8687



Pyeongtaek Culture Tour

포천시 Pocheon-si



Pocheon Art Valley

A complex culture and art space where you can enjoy and appreciate art in nature, with granite cliffs sloped like folding screens over a beautiful emerald-colored lake.

234, Art valley-ro, Sinbuk-myeon, Pocheon-si
031-535-5068



Pocheon Culture Tour

Gyeonggi Tourism Platform



Get all the travel information about Gyeonggi via the Gyeonggi Tourism Platform!!

031-259-4700

Request Gyeonggi Tourism Materials



Download Gyeonggi Tourism materials

031-255-8426

Gyeonggi-do Call Center

031-120

Tourist interpretation call service

1330

Inquiries via call, text, social media, sign language (video call), and foreign language (linked with BBB Korea, a free interpretation service)

24/7, 365 days per year
Tourist information, tourist interpretation, report inconveniences, connect to tourist police
Language: Nine languages including Korean, English, Chinese, Japanese, etc.

EG Tour Bus

What is EG Tour Bus?

EG Tour Bus is a foreigner-exclusive tour product that departs from Seoul and conveniently takes you to enjoy various attractions in Gyeonggi-do. You can plan your own favorite tour course around beautiful attractions in Gyeonggi-do at reasonable prices. Highly recommend EG Tour Bus, filled with fun activities and beautiful scenery.



부천시 Bucheon-si



Korea Manhwa Museum

A comic museum with diverse attractions such as a comic book library, an old comic book store, 3D theater, webtoon experience exhibition, photo zones, etc.

1, Gilju-ro, Wonmi-gu, Bucheon-si
032-310-3090



Bucheon City Hall

성남시 Seongnam-si



Moran Five-Day Folk Market

This is the largest traditional five-day market in Korea and a marketplace in the city center. It opens every five days, on the days ending with 4 and 9. You can find everything there, where people gather, buying and selling various items.

68, Dunchon-daero, Jungwon-gu, Seongnam-si 031-721-9905



Seongnam Tour

양평군 Yangpyeong-gun



Dumulmeori

This representative ecological tourist area of Yangpyeong, boasts beautiful scenery where the "two waters" of the Bukhangang and Namhangang Rivers meet. It is designated as one of the 100 Must-Visit Tourist Spots of Korea for its natural beauty.

119, Dumulmeori-gil, Yangseo-myeon, Yangpyeong-gun 031-775-8700



Yangpyeong Tour

yeosu-si Yeosu-si



Yeongneung, Royal Tomb of King Sejong

This is the joint royal tomb of King Sejong and his wife Queen Soheon of the Joseon period. King Sejong not only invented Hangeul, but also scientific and agricultural tools including the sundial and the rain gauge. He also expanded the national territory by conquering the Jurchen people in the north and Tsushima Island.

901-3, Wangdae-ri, Sejongdaewang-myeon, Yeosu-si
031-885-3213-4



Yeosu Culture Tour

한남시 Hanam-si



Hanam Union Park & Tower

An environmentally friendly facility, where sewage and disposal facilities were constructed underground for the first time in Korea. A residents' welfare facility was created above ground. The Tower Observatory, standing at a height of 105 meters, offers panoramic views of Hanam.

710, Misa-daero, Hanam-si 031-790-6255



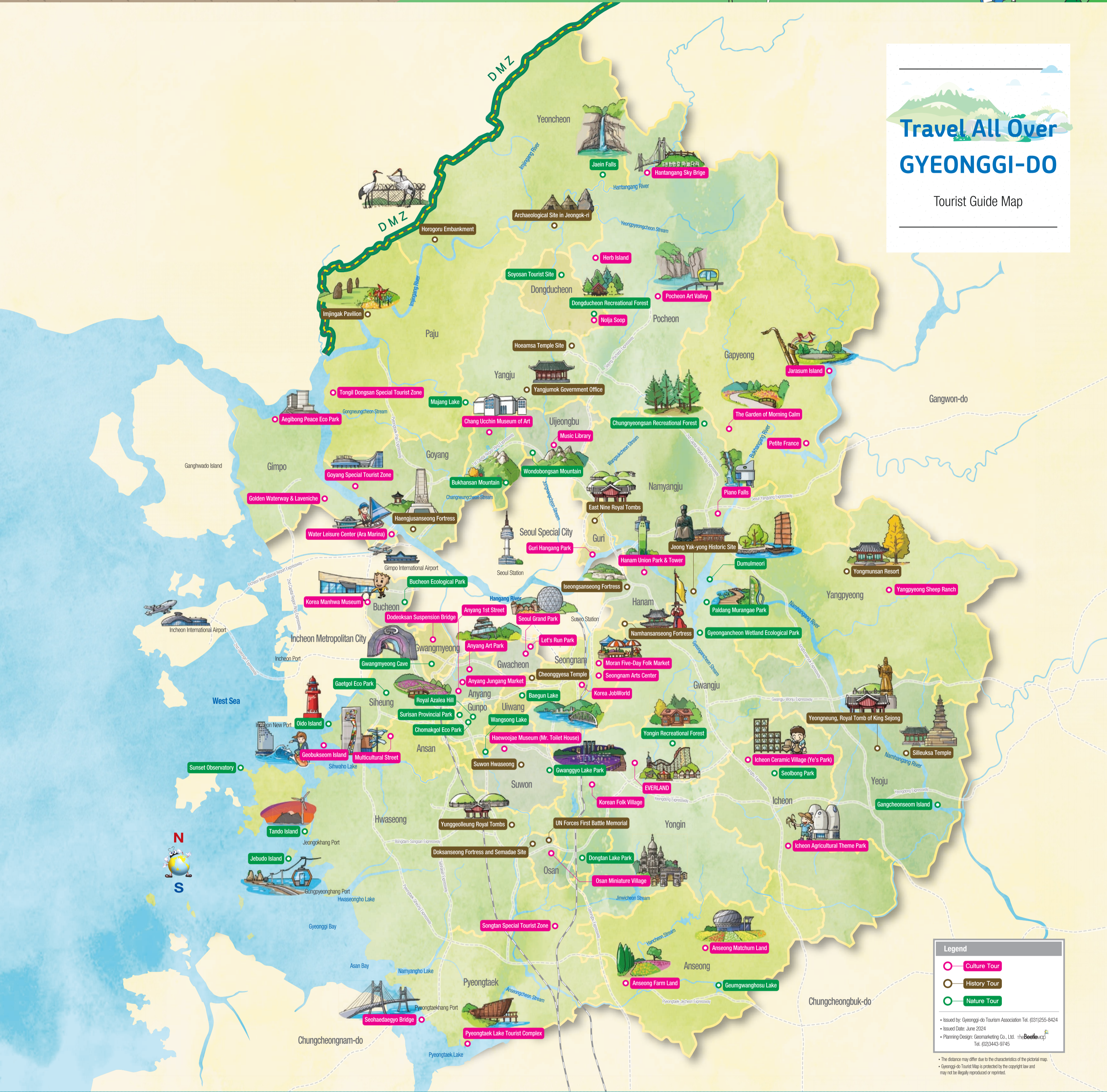
Hanam City Hall

화성시 Hwaseong-si</



Travel All Over GYEONGGI-DO

Tourist Guide Map



Legend

- Culture Tour
- History Tour
- Nature Tour

• Issued by: Gyeonggi-do Tourism Association Tel. (031)255-8424
 • Issued Date: June 2024
 • Planning/Design: Geomarketing Co., Ltd. theBeelle, Inc. Tel. (02)3443-9745

• The distance may differ due to the characteristics of the pictorial map.
 • Gyeonggi-do Tourist Map is protected by the copyright law and may not be legally reproduced or reprinted.

Festivals of Gyeonggi-do

<p>Suwon</p> <p>Suwon Hwaseong Cultural Festival</p> <p>Dates Oct. 4 - 6, 2024 Venue Around Suwon Hwaseong, including Haenggung Square</p>	<p>Siheung</p> <p>Siheung Gaetgol Festival</p> <p>Dates Sep. 27 - 29, 2024 Venue Siheung Gaetgol Ecology Park</p>	<p>Goyang</p> <p>Goyang Haengju Cultural Festival</p> <p>Dates May 17 - 19, 2024 Venue Haengjusanseong Fortress and History Park</p>	<p>Hwaseong</p> <p>Jeongjo Hyo Cultural Festival</p> <p>Dates Oct. 5 - 6, 2024 Venue Jeongjo Hyo Park, Yunggeolleung, Yongjusa Temple, and Mamyongje Reservoir</p>	<p>Gwangju</p> <p>Gwangju Royal Ceramic Conference</p> <p>Dates May 3 - 15, 2024 Venue Gonjam Ceramic Park</p>	<p>Gwangju</p> <p>Namhansanseong Cultural Festival</p> <p>Dates Oct. 3 - 6, 2024 Venue Namhansanseong Provincial Park</p>	<p>Pocheon</p> <p>Pocheon Sangjeong Lake Myeongseongsan Silver Grass Festival</p> <p>Dates Oct. 11 - 27, 2024 Venue Myeongseongsan Mountain and Sangjeong Lake, Pocheon</p>	<p>Yangpyeong</p> <p>Yangpyeong Yongmunsan Wild Plants Festival</p> <p>Dates April 26 - 28, 2024 Venue Yongmunsan Resort</p>
<p>Anseong</p> <p>Anseong Namsadang Baudeoji Festival</p> <p>Dates Oct. 3 - 6, 2024 Venue Anseong Matchum Land and Ansongcheon Stream</p>	<p>Yeoncheon</p> <p>Yeoncheon Paleolithic Festival</p> <p>Dates May 3 - 6, 2024 Venue Archaeological Site in Jeongok-ri, Yeoncheon</p>	<p>Bucheon</p> <p>Bucheon International Comics Festival</p> <p>Dates Oct. 3 - 6, 2024 Venue KOMACON and Korea Manhwa Museum</p>	<p>Namyangju</p> <p>Gwangneung Forest Festival</p> <p>Dates Sep. 28 - 29, 2024 Venue Gwangneung Forest</p>	<p>Gwangmyeong</p> <p>Gwangmyeong Cave Wine Festival</p> <p>Dates Oct. 4 - 6, 2024 Venue Gwangmyeong Cave Light Space</p>	<p>Gunpo</p> <p>Gunpo Royal Azalea Festival</p> <p>Dates April 20 - 28, 2024 Venue Nocha Road, Royal Azalea Hill, Royal Azalea Park, and Chomakgol Eco Park, Gunpo-si</p>	<p>Yeouju</p> <p>Yeouju Ceramic Festival</p> <p>Dates May 3 - 12, 2024 Venue Silleuksa Temple Tourist Area, Yeouju</p>	<p>Yeouju</p> <p>Yeouju GogokNaru Festival</p> <p>Dates Oct. 18 - 20, 2024 Venue Silleuksa Temple Tourist Area, Yeouju</p>
<p>Hwaseong</p> <p>Hwaseong Boating Festival</p> <p>Dates May 31 - June 2, 2024 Venue Jeongkhang Port, Hwaseong</p>	<p>Suwon</p> <p>Suwon Jazz Festival</p> <p>Dates Sep. 27 - 28, 2024 Venue Gwanggyo Lake Park Fun Farm</p>	<p>Namyangju</p> <p>Jeong Yak-yong Cultural Festival</p> <p>Dates Oct. 11 - 12, 2024 Venue Jeong Yak-yong Historic Site and Dasan Ecological Park, Namyangju-si</p>	<p>Anyang</p> <p>Anyang Dance Festival</p> <p>Dates Sep. 27 - 29, 2024 Venue Pyeongchon Central Park, Sameok Park, etc., in Anyang-si</p>	<p>Yangju</p> <p>Hoamsaji Royal Festival</p> <p>Dates May 10 - 12, 2024 Venue Hoamsa Temple Site and Okjeong Downtown</p>	<p>Osan</p> <p>Osan Yamaek Festival</p> <p>Dates May 24 - 26, 2024 Venue Osan Osaek Market</p>	<p>Dongducheon</p> <p>Dongducheon Rock Festival</p> <p>Dates Aug. 30 - 31, 2024 Venue Soyosan Parking Plaza</p>	<p>Gapyeong</p> <p>Jarasum Flower Festa</p> <p>Dates May 25 - June 16, 2024 Venue Jarasum Island</p>
<p>Hwaseong</p> <p>Hwaseong Boating Festival</p> <p>Dates May 31 - June 2, 2024 Venue Jeongkhang Port, Hwaseong</p>	<p>Suwon</p> <p>Suwon Jazz Festival</p> <p>Dates Sep. 27 - 28, 2024 Venue Gwanggyo Lake Park Fun Farm</p>	<p>Paju</p> <p>Heiri Pan Festival</p> <p>Dates Oct. 5 - 13, 2024 Venue Heiri Art Village</p>	<p>Paju</p> <p>Paju Jangdan Soybean Festival</p> <p>Dates Nov. 22 - 24, 2024 Venue Imjingak Square and Pyeonghwa Nuri Park, Paju-si</p>	<p>Icheon</p> <p>Icheon Ceramics Festival</p> <p>Dates April 25 - May 6, 2024 Venue Icheon Ceramic Village (Ye's Park), Sagimakgol Pottery Village</p>	<p>Icheon</p> <p>Icheon Rice Cultural Festival</p> <p>Dates Oct. 16 - 20, 2024 Venue Icheon Agricultural Theme Park</p>		